



**3265 Meridian Parkway
Weston, FL 33331**

Meridian Business Campus of Weston



Located within Meridian Business Campus, 3265 Meridian Parkway offers image conscious businesses an attractive and flexible multi-use facility. The single story building provides a creative alternative to companies needing both office and distribution space. In keeping with the high standards of Meridian Business Campus, impressive landscaping enhances the convenient, lakefront property.

Flex Space Available For Lease

For Further Information, Contact:

Timothy Talbot

(954) 385-0000

ttalbot@comreal.com

Property Features Include

- Suite 112 - 6,599 SF Office/Warehouse
- Class B; 41,295 SF Flex Building
- 14' Clear Ceiling Height
- Ample Parking Available
- Individually Metered & Controlled Air Conditioning in Office Areas
- Conveniently Located off of I-75, South of I-595, & the Sawgrass Expressway
- Close Proximity to Restaurants, Banking & Retail Establishments
- 20 Minutes to Fort Lauderdale-Hollywood International Airport



FT. LAUDERDALE

www.comrealfortlauderdale.com

Meridian Business Campus

3265 Meridian Parkway, Weston, FL 33331

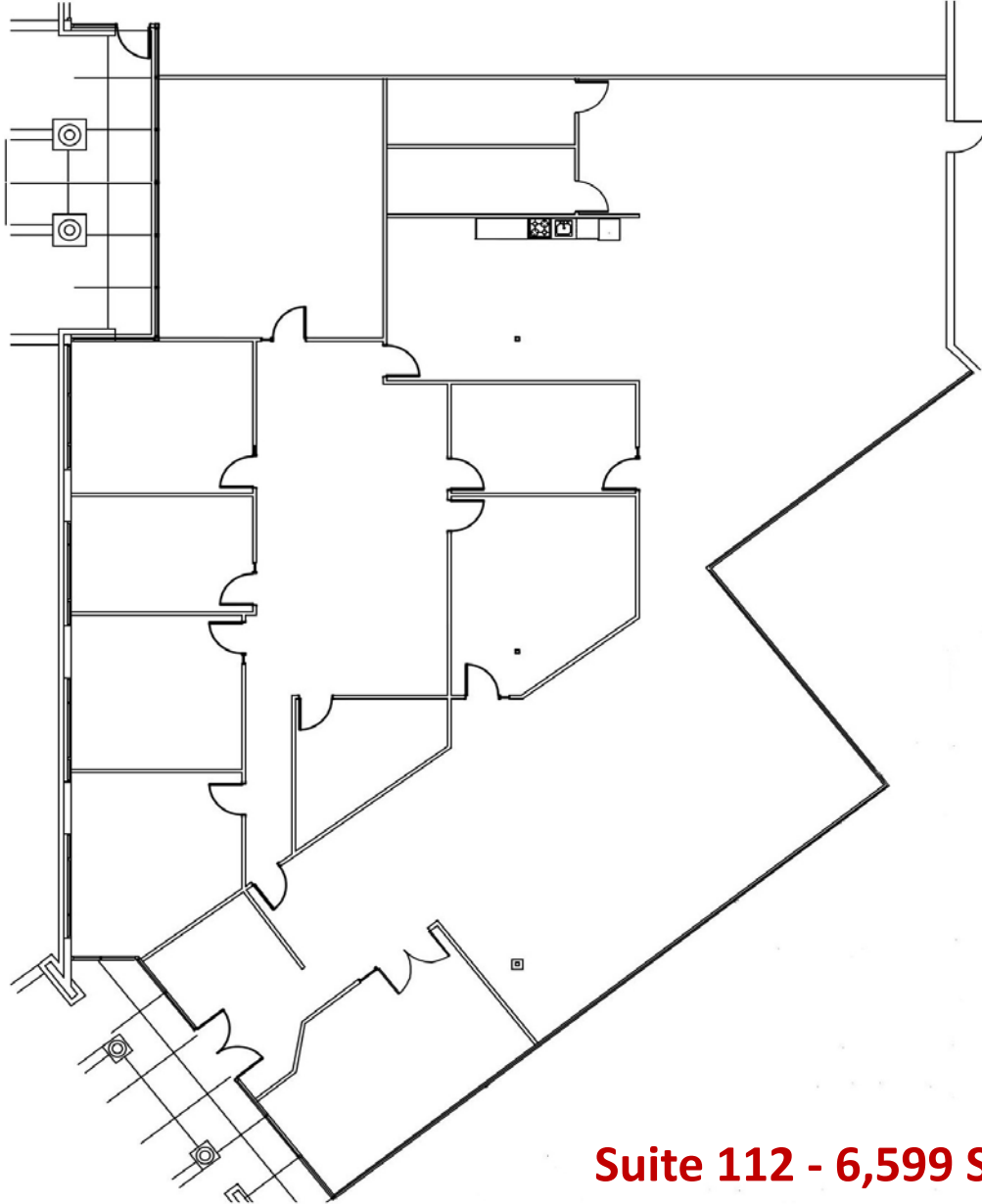


[View Property Video](#)



Meridian Business Campus

3265 Meridian Parkway, Weston, FL 33331



Suite 112 - 6,599 SF

FOR LEASING INFORMATION:

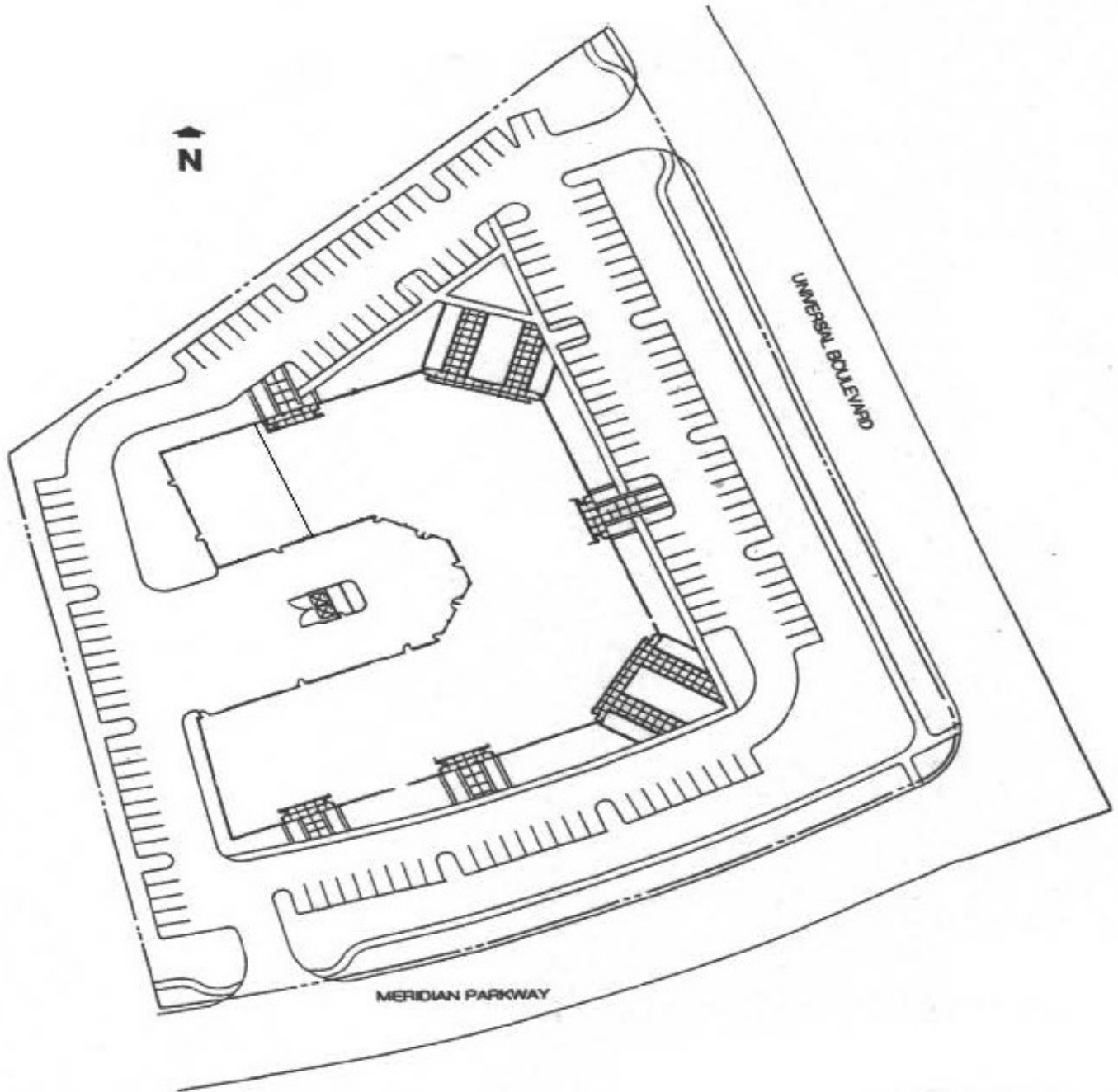
Timothy J. Talbot | ttalbot@comreal.com

954.385.0000



Site Plan

3265 Meridian Parkway



For Further Information, Contact:

Timothy Talbot

(954) 385-0000

ttalbot@comreal.com

www.comrealfortlauderdale.com

